

DTE-P

FEATURES

- ※ Compact size
- ※ Two-way operating, auto return
- ※ Circuit type: Normally open

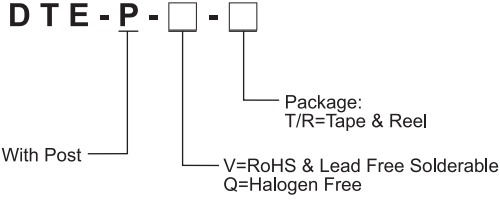
APPLICATION

- ※ Detecting opening/ closing of DSC cover
- ※ Computer peripheral
- ※ Instruments
- ※ Automotive

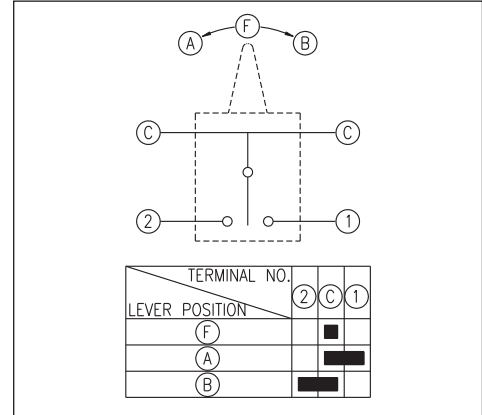
SPECIFICATION

Contact Rating	10mA, 5V DC
Contact Resistance	500mΩ max.
Insulation Resistance	100MΩ min. 100V DC
Dielectric Strength	100V AC/1 minute
Operating Force	30gf max.
Travel	1.5mm
Operating Life	100,000 cycles
Operating Temp.	-40°C ~ +85°C
Storage Temp.	-40°C ~ +85°C

HOW TO ORDER



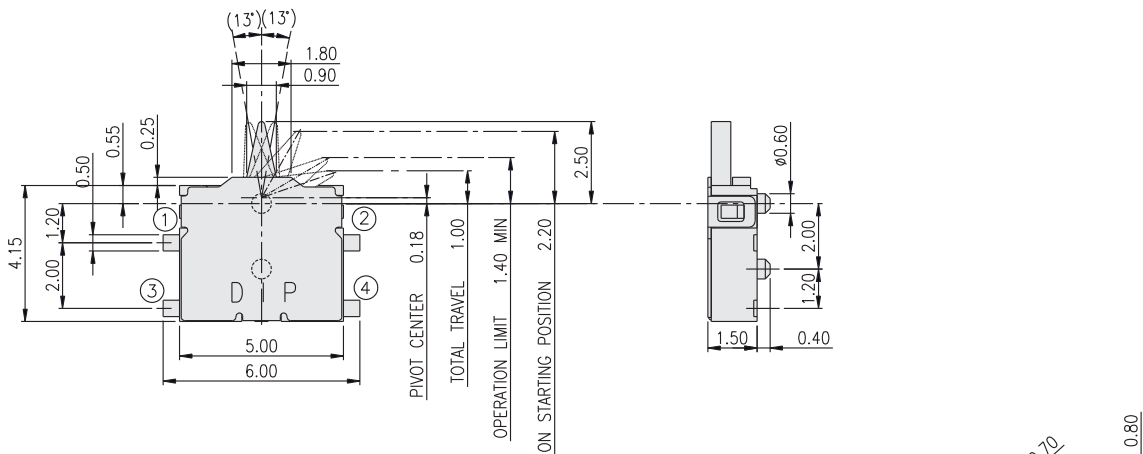
CIRCUIT



PACKAGE

<Tape & Reel>
3800 pcs

DTE-P



P.C.B. LAYOUT