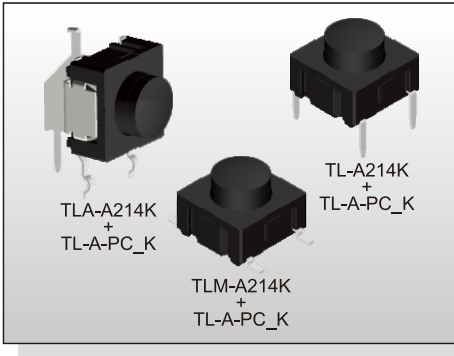


# TACT SWITCH TL(A)-A2 SERIES

10x10  
High Reliability



## FEATURES

- ✘ Sealed
- ✘ Long life of 10million
- ✘ Variety of actuator lengths

## APPLICATION

- ✘ Music instrument
- ✘ Intercom system
- ✘ Industrial

## SPECIFICATION

Contact Rating	0.5~50mA, 24V DC
Contact Resistance	30mΩ max.
Insulation Resistance	10MΩ min. 100V DC
Dielectric Strength	250V AC/1 minute
Operating Force	300±75gf
Travel	1mm
Operating Life	10,000, 000 cycles
Operating Temp.	-40°C ~ +160°C
Storage Temp.	-40°C ~ +160°C

## HOW TO ORDER

TL  - A 2 1 4 K - Q -  + TL - A - PC  K

=Through Hole  
M=S.M.T.  
A=Right Angle

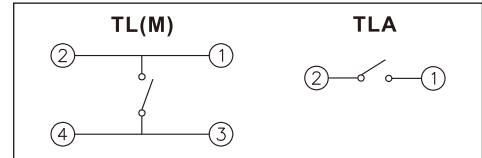
Package:  
B=Tube  
(For Through Hole Type)  
T/R=Tape & Reel(For S.M.T. Type)

Halogen Free

Button Color:  
Black

Operating Force:  
300gf

## CIRCUIT



## PACKAGE

<Tube>

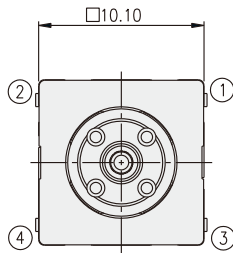
TL(A): 45 pcs

<Tape & Reel>

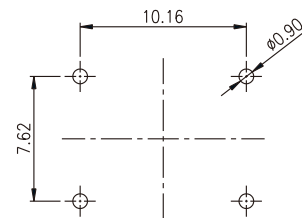
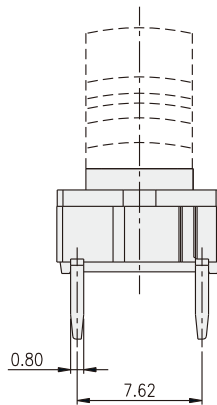
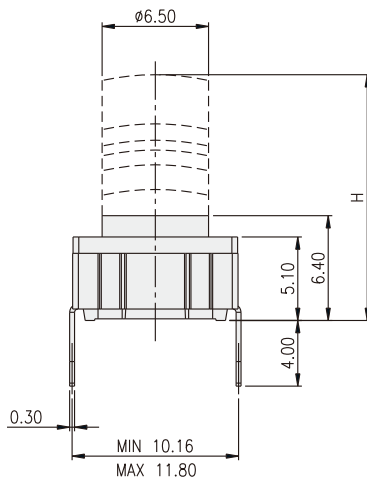
TLM: 650 pcs

TACT SWITCH

## TL-A214K+TL-A-PCK

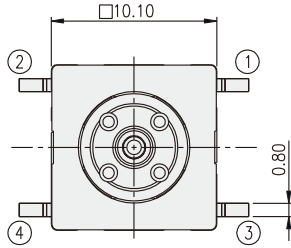


PART NO.	H
TL-A214K-Q-B+TL-A-PC1K	8.00
TL-A214K-Q-B+TL-A-PC2K	9.50
TL-A214K-Q-B+TL-A-PC3K	10.40
TL-A214K-Q-B+TL-A-PC4K	11.00
TL-A214K-Q-B+TL-A-PC5K	12.00
TL-A214K-Q-B+TL-A-PC6K	15.00

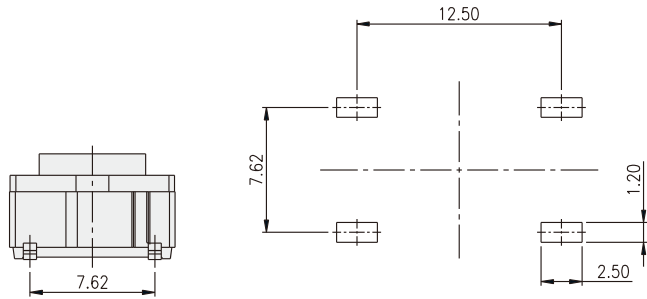
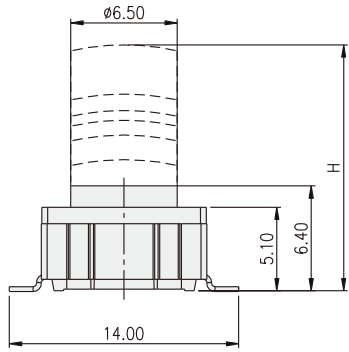


P.C.B. LAYOUT

**TLM-A214K+TL-A-PC□K**

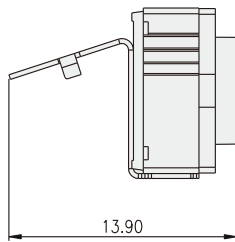


PART NO.	H
TLM-A214K-Q-B+TL-A-PC1K	8.00
TLM-A214K-Q-B+TL-A-PC2K	9.50
TLM-A214K-Q-B+TL-A-PC3K	10.40
TLM-A214K-Q-B+TL-A-PC4K	11.00
TLM-A214K-Q-B+TL-A-PC5K	12.00
TLM-A214K-Q-B+TL-A-PC6K	15.00

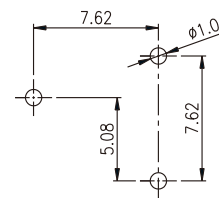
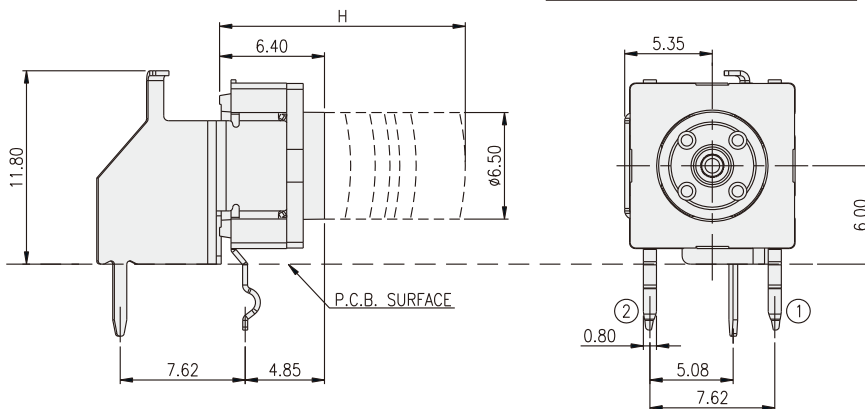


P.C.B. LAYOUT

**TLA-A214K+TL-A-PC□K**



PART NO.	H
TLA-A214K-Q-B+TL-A-PC1K	8.00
TLA-A214K-Q-B+TL-A-PC2K	9.50
TLA-A214K-Q-B+TL-A-PC3K	10.40
TLA-A214K-Q-B+TL-A-PC4K	11.00
TLA-A214K-Q-B+TL-A-PC5K	12.00
TLA-A214K-Q-B+TL-A-PC6K	15.00



P.C.B. LAYOUT