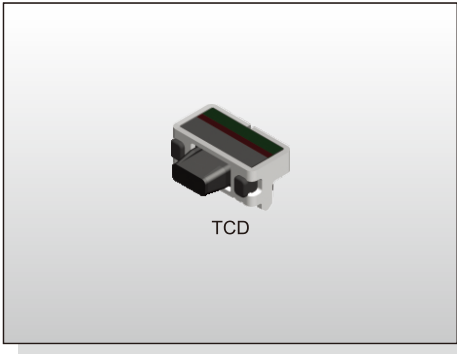


TACT SWITCH
TCD SERIES

1.7x4.5
PCB Sealed Type Side Push



TCD

FEATURES

- ※ Compact-sized
- ※ Side actuated
- ※ Sealed with dust proof
- ※ PCB-base structure

APPLICATION

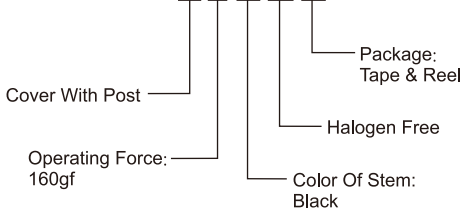
- ※ Smart phone
- ※ Digital Camera, Medical
- ※ Portable electronic device

SPECIFICATION

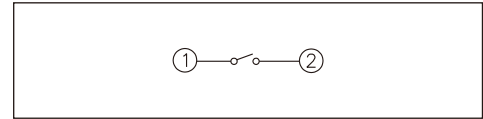
Contact Rating	50mA, 12V DC
Contact Resistance	100mΩ max.
Insulation Resistance	100MΩ min. 100V DC
Dielectric Strength	250V AC/1 minute
Operating Force	160±50gf
Travel	0.2mm
Operating Life	100,000 cycles
Operating Temp.	-40°C ~ +85°C
Storage Temp.	-40°C ~ +85°C

HOW TO ORDER

TCD-C2KQR



CIRCUIT

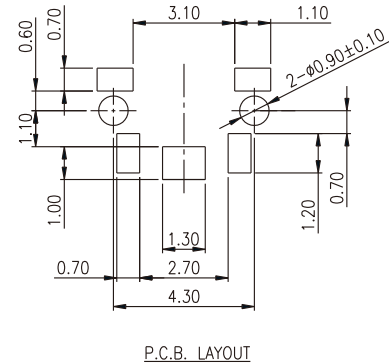
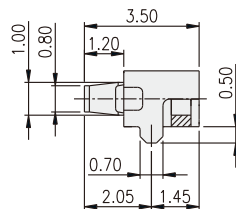
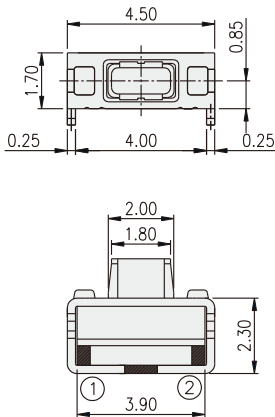


PACKAGE

<Tape & Reel>
3000 pcs

TACT SWITCH

TCD



P.C.B. LAYOUT