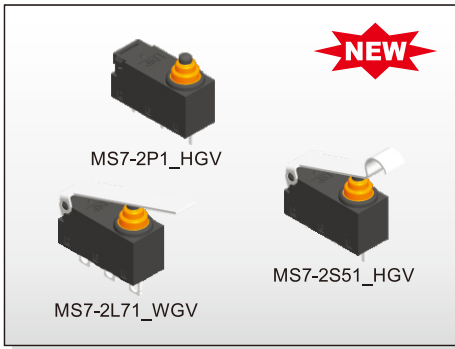


# MICRO SWITCH MS7 SERIES



## FEATURES

- ※PC board terminals option
- ※13.3x5.3x7.2mm
- ※Variety of lever options
- ※Sealed IP67.

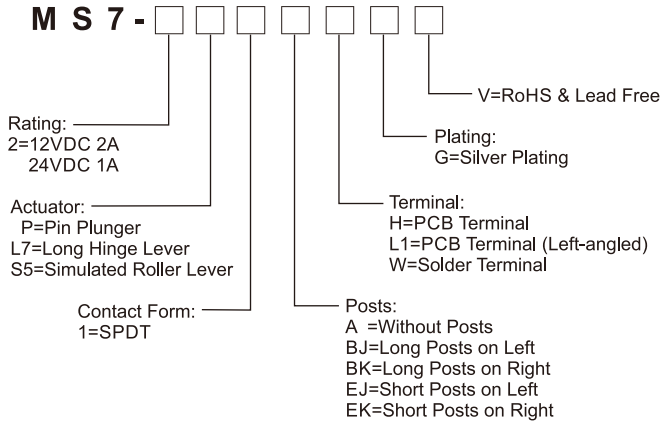
## APPLICATION

- ※Automotive industry
- ※Household appliances
- ※Vacuum cleaner

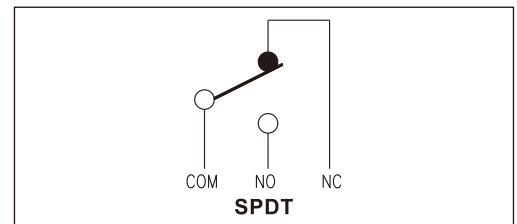
## SPECIFICATION

Contact Rating	2A at 12VDC/1A at 24VDC
Mechanical Durability	1,000,000 cycles MIN.
Electrical Durability	100,000 cycles MIN.
Contact Resistance	150mΩ MAX.
Insulation Resistance	100MΩ MIN. (at 500VDC)
Dielectric Strength	Between terminals of the same polarity: 600VAC(50Hz or 60Hz) shall be applied across terminals for 1 minute
	Between each terminal and ground: 1500VAC(50Hz or 60Hz) shall be applied across terminals for 1 minute
Operating Temp.	Between each terminal and non-current-carrying metal parts 1500VAC(50Hz or 60Hz) shall be applied across terminals for 1 minute
	-40°C ~ +85°C

## HOW TO ORDER



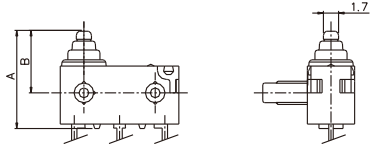
## CIRCUIT



### Actuator:

#### Pin Plunger

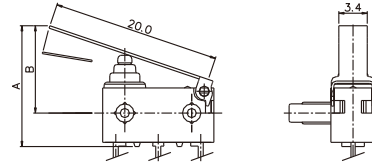
**MS7 - [ ] P [ ] [ ] [ ] [ ] [ ] [ ] [ ]**



WITHOUT POSTS(A)	MODELES WITH POSTS(B)
11.2mm MAX.	7.2mm MAX.

#### Long Hinge Lever

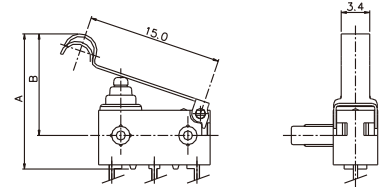
**MS7 - [ ] L7 [ ] [ ] [ ] [ ] [ ] [ ] [ ]**



WITHOUT POSTS(A)	MODELES WITH POSTS(B)
15.5mm MAX.	11.5mm MAX.

#### Simulated Roller Lever

**MS7 - [ ] S5 [ ] [ ] [ ] [ ] [ ] [ ] [ ]**

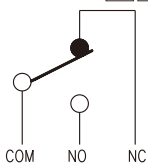


WITHOUT POSTS(A)	MODELES WITH POSTS(B)
16.5mm MAX.	12.5mm MAX.

### Contact Form:

#### SPDT

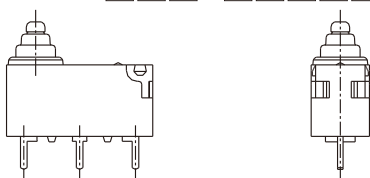
**MS7 - [ ] [ ] 1 [ ] [ ] [ ] [ ] [ ]**



### Posts:

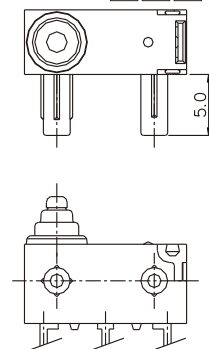
#### Without Posts

**MS7 - [ ] [ ] [ ] A [ ] [ ] [ ] [ ] [ ]**



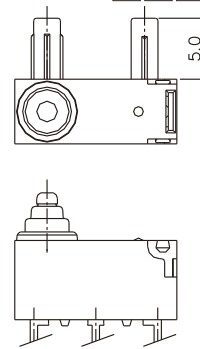
#### Long Posts on Left

**MS7 - [ ] [ ] [ ] BJ [ ] [ ] [ ] [ ] [ ]**



#### Long Posts on Right

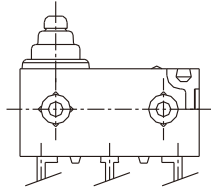
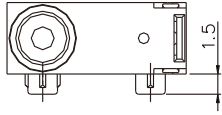
**MS7 - [ ] [ ] [ ] BK [ ] [ ] [ ] [ ] [ ]**



**Posts:**

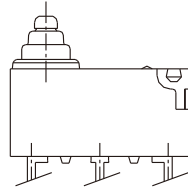
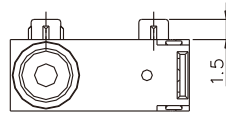
Short Posts on Left

**MS7 - □□□□EJ□□□□**



Short Posts on Right

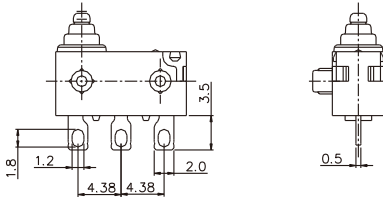
**MS7 - □□□□EK□□□□**



**Terminal:**

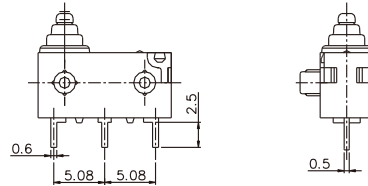
Solder Terminal

**MS7 - □□□□W□□□**



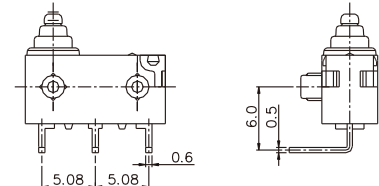
PCB Terminal

**MS7 - □□□□H□□□**

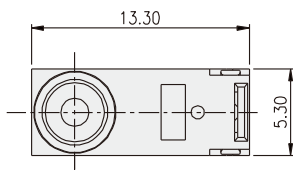


PCB Terminal (Left Angled)

**MS7 - □□□□L1□□□□**

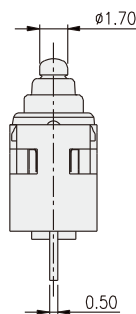
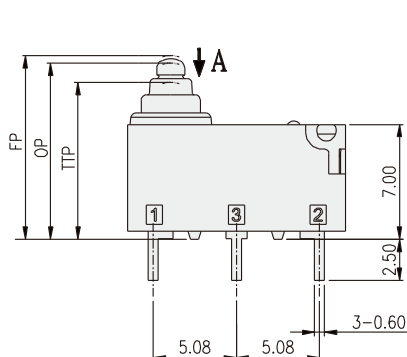


**MS7-2P1□HGV**

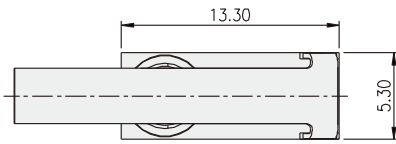


OPERATING CHARACTERISTICS

TYPE	WITHOUT POSTS	MODELES WITH POSTS
ITEM	SPEC.	
OPERATING FORCE(OF)	75gf(0.75N) MAX.	
RELEASE FORCE(RF)	10gf(0.1N) MIN.	
OVERTRAVEL(OT)	1.4mm MIN.(Reference)	
MOVEMENT DIFFERENTIAL(MD)	0.25mm MAX.	
FREE POSITION(FP)	11.2mm MAX.	7.2mm MAX.
OPERATING POSITION(OP)	10.40±0.20mm	6.40±0.20mm
TOTAL TRAVEL POSITION(TTP)	9.1mm MAX.	5.1mm MAX.

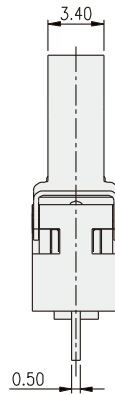
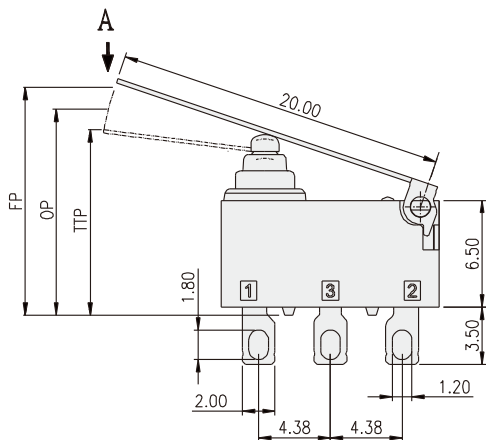


**MS7-2L71** □ WGV



OPERATING CHARACTERISTICS

TYPE	WITHOUT POSTS	MODELES WITH POSTS
ITEM	SPEC.	
OPERATING FORCE(OF)	50gf(0.5N) MAX.	
RELEASE FORCE(RF)	3gf(0.03N) MIN.	
OVERTRAVEL(OT)	2.5mm MIN.(Reference)	
MOVEMENT DIFFERENTIAL(MD)	0.8mm MAX.	
FREE POSITION(FP)	15.5mm MAX.	11.5mm MAX.
OPERATING POSITION(OP)	13.30±0.80mm	9.30±0.80mm
TOTAL TRAVEL POSITION(TTP)	11mm MAX.	7.0mm MAX.



**MS7-2S51** □ HGV

OPERATING CHARACTERISTICS

TYPE	WITHOUT POSTS	MODELES WITH POSTS
ITEM	SPEC.	
OPERATING FORCE(OF)	66gf(0.65N) MAX.	
RELEASE FORCE(RF)	5gf(0.05N) MIN.	
OVERTRAVEL(OT)	1.90mm MIN.(Reference)	
MOVEMENT DIFFERENTIAL(MD)	0.5mm MAX.	
FREE POSITION(FP)	16.5mm MAX.	12.5mm MAX.
OPERATING POSITION(OP)	15.20±0.50mm	11.20±0.50mm
TOTAL TRAVEL POSITION(TTP)	13.5mm MAX.	9.5mm MAX.

