

FEATURES

- ※Electrical life: 100,000 cycles
- ※3.2x4.0mm miniature tact switch

APPLICATION

- ※Control panel
- ※Remote controls
- ※Keyless entry devices

SPECIFICATION

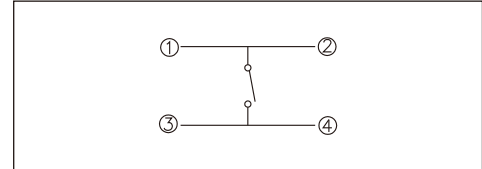
Contact Rating	10μA, 1V DC to 50mA, 16V DC
Contact Resistance	500mΩ max.
Insulation Resistance	100MΩ min. 100V DC
Dielectric Strength	250V AC/1 minute
Operating Force	160±50gf/260±80gf/400±100gf
Travel	0.12mm
Operating Life	100,000 cycles
Operating Temp.	-30°C ~ +85°C
Storage Temp.	-30°C ~ +85°C

HOW TO ORDER

TAH □ QR

- Operating Force:
1=160gf (Brown)
2=260gf (White)
3=400gf (Black)
- Package:
Tape & Reel
- Halogen Free

CIRCUIT

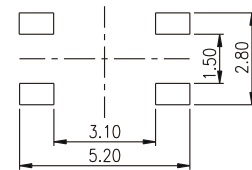
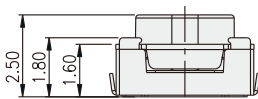
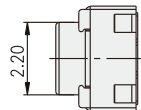
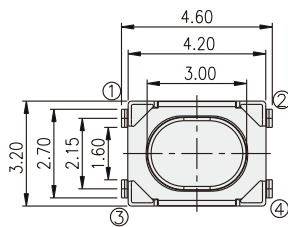


PACKAGE

<Tape & Reel>
3000 pcs

TACT SWITCH

TAH



P.C.B. LAYOUT